

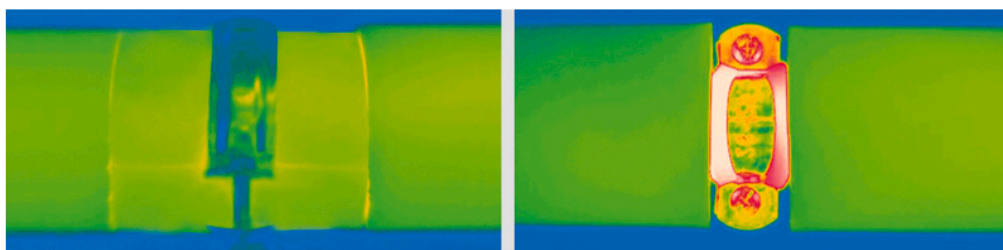
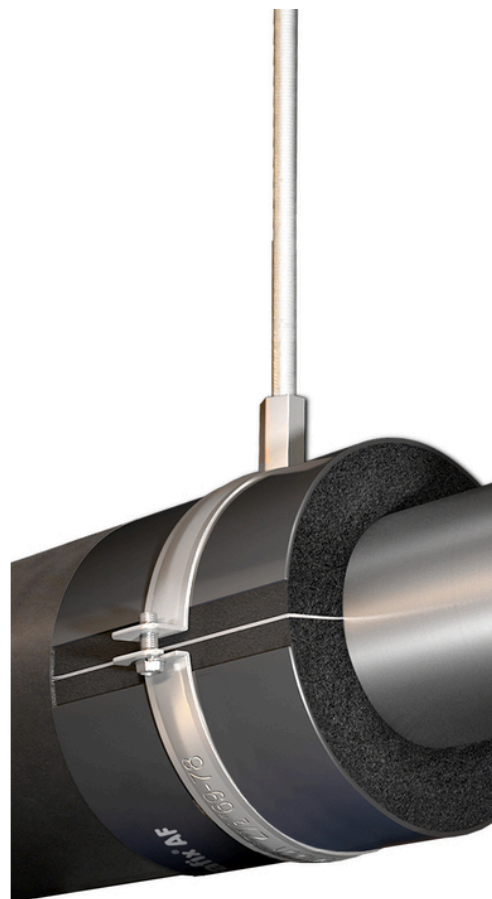


INSTALL IT. TRUST IT.

ArmaFix AF

The cutting-edge pipe support

- // Reliable prevention of thermal bridges
- // Environmentally-friendly, lightweight PET load bearing segments
- // Fast installation thanks to self-adhesive closure
- // Extended warranty with ArmaFlex



 **armacell**[®]
ArmaFix[®]

TECHNICAL DATA - ARMAFIX AF

Brief description	Pipe and duct support for refrigeration and air-conditioning installations to prevent condensation at fixing points. Thermally non-interacting single piece, with 2 ArmaForm PET foam sections and with self-adhesive closure. All dimensions are matching the AF/ArmaFlex and AF/ArmaFlex Evo range.
Material type	PET- foam bearing segments, embedded in and glued to AF/ArmaFlex elastomeric foam material. Outside bearing shells made of painted aluminium sheeting 0.8 mm thick, which simultaneously serves as a vapour barrier for the PET bearing segments.
Product colour range	Black grey
Special features	Traces of silicone can be found on the protection paper / foil used to protect self-adhesive closures.
Applications	When used in installations with intermittent temperatures, thermal length extensions may cause inherent pressure in the installation; this needs to be considered in the overall insulation construction.

Property	Value / Assessment			Standard / Test method
Temperature range				
Service temperature	Range	Min. °C ¹	Max. °C	EN 14706, EN 14707, EN 14304
	Full range	-50	110	
Thermal conductivity				
Remarks	Same as AF/ArmaFlex. Same as AF/ArmaFlex Evo.			EN ISO 13787, EN 12667, EN ISO 8497
Fire Performance and Approvals				
Reaction to fire	Euroclass: E (L) Entire System with AF/ArmaFlex: B / B(L)-s3, d0 Entire System with AF/ArmaFlex Evo: B / B(L)-s2, d0			EN 13501-1, EN 13823, EN ISO 11925-2
Surface flammability ²	low-flammable - 2010 FTP-Code (MED 96/98/EC, Module D)			IMO 2010 FTP Code, Part 5
Fire performance				
Practical fire behaviour	Self extinguishing, does not drip, does not spread flames.			
Resistance to water vapour				
Water vapour diffusion resistance factor	Same as AF/ArmaFlex Same as AF/ArmaFlex Evo			EN 12086, EN 13469
Physical attributes				
Density	95 - 105 kg/m ³ (pipe bearing segments)			
Acoustic performance				
Reduction of structure-borne sound transmission	in combination with AF/ArmaFlex ≤ 28 dB(A)			EN ISO 3822-1
Health and environment				
Additional features	MCCP-free			
Other technical features				
Shelf life	3 years			
Storage	Can be stored in dry, clean rooms at normal relative humidity (50% to 70%) and ambient temperature (0 °C – 35 °C).			

¹ For temperatures below -50 °C please contact our Customer Service Center to request for the corresponding technical information.

² According to IMO 2010 FTP Code annex 2, clause 2.2 a fire technical test for smoke density and toxicity is not necessary.

Pipe support – combi pack. Pipe support and suitable clamp designed for use with AF/ArmaFlex.

AF-2 (insulation thickness: 9.5mm - 16.0mm)					AF-4 (AF-3)* (insulation thickness 15.5 mm - 22.5 mm)				
Pipe Ø [mm]	Also fits pipe OD [mm]	Maximum permissible distance [m]	Item	Content [quantity]	Pipe Ø [mm]	Also fits pipe OD [mm]	Maximum permissible distance [m]	Item	Content [quantity]
10	12	2.00	FX-2-10/12K	32 piece	10	12	2.00	FX-4(3)-10/12K	26 piece
15	18	2.00	FX-2-15/18K	24 piece	15	18	2.00	FX-4(3)-15/18K	24 piece
22	25	2.75	FX-2-22/25K	24 piece	22	25	2.75	FX-4(3)-22/25K	12 piece
28	30	3.00	FX-2-28/30K	16 piece	28	30	3.00	FX-4(3)-28/30K	12 piece
35	38	3.50	FX-2-35/38K	12 piece	35	38	3.50	FX-4(3)-35/38K	12 piece
42	45	3.75	FX-2-42/45K	12 piece	42	45	3.75	FX-4(3)-42/45K	12 piece
48		4.25	FX-2-48K	12 piece	48		4.25	FX-4(3)-48K	12 piece
54	57	4.25	FX-2-54/57K	12 piece	54	57	4.25	FX-4(3)-54/57K	16 piece
60	64	4.75	FX-2-60/64K	10 piece	60	64	4.75	FX-4(3)-60/64K	12 piece
70		4.75	FX-2-70K	16 piece	70		4.75	FX-4(3)-70K	12 piece
76	80	5.50	FX-2-76/80K	12 piece	76	80	5.50	FX-4(3)-76/80K	18 piece
89		6.00	FX-2-89K	8 piece	89		6.00	FX-4(3)-89K	14 piece

Other information

Regulation

Maximum permissible distance according to DIN 1988.

Remarks

Pipe supports for plastic and stainless-steel pipes available on request.
*Suitable for application with tubes of insulation thickness AF-3 and AF-4.

Pipe support – combi pack. Pipe support and suitable clamp designed for use with AF/ArmaFlex.

AF-6 (insulation thickness: 32.0mm - 45.0mm)				
Pipe Ø [mm]	Also fits pipe OD [mm]	Maximum permissible distance [m]	Item	Content [quantity]
15	18	2.00	FX-6-15/18K	20 piece
22	25	2.75	FX-6-22/25K	18 piece
28	30	3.00	FX-6-28/30K	12 piece
35	38	3.50	FX-6-35/38K	12 piece
42	45	3.75	FX-6-42/45K	12 piece
48		4.25	FX-6-48K	12 piece
54	57	4.25	FX-6-54/57K	8 piece
60	64	4.75	FX-6-60/64K	10 piece
70		4.75	FX-6-70K	9 piece
76	80	5.50	FX-6-76/80K	6 piece
89		6.00	FX-6-89K	4 piece

Other information

Regulation

Maximum permissible distance according to DIN 1988.

Remarks

Pipe supports for plastic and stainless-steel pipes available on request.
*Suitable for application with tubes of insulation thickness AF-3 and AF-4.

Pipe support – donut type

AF-2 (insulation thickness: 9.5mm - 16.0mm)							Related pipe clamp	
Pipe Ø [mm]	Also fits pipe OD [mm]	Maximum permissible distance [m]	Item	Outer diameter range [mm]	Length [mm]	Content [quantity]	Item	Content [quantity]
10	12	2.00	FX-2-10/12	34 - 36	45	32 piece	-	-

Pipe support – donut type

AF-2 (insulation thickness: 9.5mm - 16.0mm)							Related pipe clamp	
Pipe Ø [mm]	Also fits pipe OD [mm]	Maximum permissible distance [m]	Item	Outer diameter range [mm]	Length [mm]	Content [quantity]	Item	Content [quantity]
15	18	2.00	FX-2-15/18	40 - 43	45	32 piece	PCX 033/037	25 piece
22	25	2.75	FX-2-22/25	47 - 50	45	32 piece	PCX 042/046	25 piece
28	30	3.00	FX-2-28/30	53 - 56	45	32 piece	PCX 047/052	25 piece
35	38	3.50	FX-2-35/38	61 - 65	50	28 piece	PCX 054/058	25 piece
42	45	3.75	FX-2-42/45	69 - 72	50	28 piece	PCX 063/068	25 piece
48		4.25	FX-2-48	76	55	28 piece	PCX 068/073	10 piece
54	57	4.25	FX-2-54/57	82 - 85	55	28 piece	PCX 072/080	10 piece
60	64	4.75	FX-2-60/64	89 - 92	65	24 piece	PCX 082/085	10 piece
70		4.75	FX-2-70	98	65	24 piece	PCX 092/099	10 piece
76	80	5.50	FX-2-76/80	105 - 109	75	20 piece	PCX 099/103	10 piece
89		6.00	FX-2-89	118	95	16 piece	PCX 112/118	10 piece
102	108	6.00	FX-2-102/108	134 - 141	95	16 piece	PCX 133/137	10 piece
110	114	6.00	FX-2-110/114	140 - 144	115	12 piece	PCX 137/142	10 piece
125		6.00	FX-2-125	158	115	12 piece	PCX 145/152	10 piece
133	140	6.00	FX-2-133/140	165 - 172	115	12 piece	PCX 159/164	10 piece
160		6.00	FX-2-160	193	115	9 piece	PCX 190	10 piece
165	168	6.00	FX-2-165/168	198 - 201	125	9 piece	PCX 199	10 piece

Other information

Regulation	Maximum permissible distance according to DIN 1988.
Remarks	Pipe supports for plastic and stainless-steel pipes available on request. Outer diameter is the same as installation diameter. *Suitable for application with tubes of insulation thickness AF-3 and AF-4.

Pipe support – donut type

AF-4 (AF-3)* (insulation thickness 15.5 mm - 22.5 mm)							Related pipe clamp	
Pipe Ø [mm]	Also fits pipe OD [mm]	Maximum permissible distance [m]	Item	Outer diameter range [mm]	Length [mm]	Content [quantity]	Item	Content [quantity]
10	12	2.00	FX-4(3)-10/12	46 - 48	55	28 piece	PCX 042/046	25 piece
15	18	2.00	FX-4(3)-15/18	52 - 55	55	28 piece	PCX 042/046	25 piece
22	25	2.75	FX-4(3)-22/25	60 - 64	55	28 piece	PCX 054/058	25 piece
28	30	3.00	FX-4(3)-28/30	66 - 70	55	28 piece	PCX 063/068	25 piece
35	38	3.50	FX-4(3)-35/38	74 - 79	65	24 piece	PCX 068/073	10 piece
42	45	3.75	FX-4(3)-42/45	85 - 88	65	24 piece	PCX 072/080	10 piece
48		4.25	FX-4(3)-48	91	65	24 piece	PCX 082/085	10 piece
54	57	4.25	FX-4(3)-54/57	98 - 101	65	24 piece	PCX 088/092	10 piece
60	64	4.75	FX-4(3)-60/64	105 - 109	75	20 piece	PCX 099/103	10 piece
70		4.75	FX-4(3)-70	116	75	20 piece	PCX 108/112	10 piece
76	80	5.50	FX-4(3)-76/80	122 - 127	85	16 piece	PCX 112/118	10 piece
89		6.00	FX-4(3)-89	136	100	12 piece	PCX 133/137	10 piece
102	108	6.00	FX-4(3)-102/108	149 - 156	100	12 piece	PCX 137/142	10 piece
110	114	6.00	FX-4(3)-110/114	158 - 162	100	12 piece	PCX 145/152	10 piece

Pipe support – donut type

AF-4 (AF-3)* (insulation thickness 15.5 mm - 22.5 mm)							Related pipe clamp	
Pipe Ø [mm]	Also fits pipe OD [mm]	Maximum permissible distance [m]	Item	Outer diameter range [mm]	Length [mm]	Content [quantity]	Item	Content [quantity]
125		6.00	FX-4(3)-125	173	115	12 piece	PCX 168/173	10 piece
133	140	6.00	FX-4(3)-133/140	183 - 189	115	12 piece	PCX 190	10 piece
160		6.00	FX-4(3)-160	210	115	6 piece	PCX 206	10 piece
165	168	6.00	FX-4(3)-165/168	216 - 219	125	6 piece	PCX 222	10 piece
180		6.00	FX-4(3)-180	231	150	3 piece	-	-
204		6.00	FX-4(3)-204	255	170	4 piece	-	-
216	219	6.00	FX-4(3)-216/219	267 - 270	170	4 piece	-	-
225		6.00	FX-4(3)-225	256	170	4 piece	-	-
254		6.00	FX-4(3)-254	305	170	3 piece	-	-
267	273	6.00	FX-4(3)-267/273	318 - 324	170	3 piece	-	-
280		6.00	FX-4(3)-280	331	170	4 piece	-	-
306		6.00	FX-4(3)-306	357	215	1 piece	-	-
324		4.50	FX-4(3)-324	375	215	1 piece	-	-
356		4.20	FX-4(3)-356	407	215	6 piece	-	-
406		4.20	FX-4(3)-406	457	215	6 piece	-	-
457		3.70	FX-4(3)-457	508	215	4 piece	-	-
508		3.40	FX-4(3)-508	559	215	4 piece	-	-
610		2.90	FX-4(3)-610	661	215	2 piece	-	-

Other information

Regulation	Maximum permissible distance according to DIN 1988.
Remarks	Pipe supports for plastic and stainless-steel pipes available on request. Outer diameter is the same as installation diameter. *Suitable for application with tubes of insulation thickness AF-3 and AF-4.

Pipe support – donut type

AF-6 (insulation thickness: 32.0mm - 45.0mm)							Related pipe clamp	
Pipe Ø [mm]	Also fits pipe OD [mm]	Maximum permissible distance [m]	Item	Outer diameter range [mm]	Length [mm]	Content [quantity]	Item	Content [quantity]
10	12	2.00	FX-6-10/12	68 - 71	75	20 piece	PCX 063/068	25 piece
15	18	2.00	FX-6-15/18	74 - 77	75	20 piece	PCX 068/073	10 piece
22	25	2.75	FX-6-22/25	80 - 84	75	20 piece	PCX 072/080	10 piece
28	30	3.00	FX-6-28/30	91 - 95	75	20 piece	PCX 082/085	10 piece
35	38	3.50	FX-6-35/38	104 - 109	85	16 piece	PCX 099/103	10 piece
42	45	3.75	FX-6-42/45	113 - 116	85	16 piece	PCX 099/103	10 piece
48		4.25	FX-6-48	119	85	16 piece	PCX 112/118	10 piece
54	57	4.25	FX-6-54/57	126 - 129	85	16 piece	PCX 112/118	10 piece
60	64	4.75	FX-6-60/64	134 - 137	100	12 piece	PCX 133/137	10 piece
70		4.75	FX-6-70	144	100	12 piece	PCX 137/142	10 piece
76	80	5.50	FX-6-76/80	152 - 156	115	12 piece	PCX 137/142	10 piece
89		6.00	FX-6-89	167	125	12 piece	PCX 159/164	10 piece
102	108	6.00	FX-6-102/108	179 - 188	125	12 piece	PCX 190	10 piece

Pipe support – donut type

AF-6 (insulation thickness: 32.0mm - 45.0mm)							Related pipe clamp	
Pipe Ø [mm]	Also fits pipe OD [mm]	Maximum permissible distance [m]	Item	Outer diameter range [mm]	Length [mm]	Content [quantity]	Item	Content [quantity]
110	114	6.00	FX-6-110/114	188 - 196	145	12 piece	PCX 199	10 piece
125		6.00	FX-6-125	207	145	12 piece	PCX 206	10 piece
133	140	6.00	FX-6-133/140	219 - 225	145	8 piece	PCX 231	10 piece
160		6.00	FX-6-160	248	145	6 piece	PCX 249	10 piece
165	168	6.00	FX-6-165/168	254 - 257	165	5 piece	PCX 259	10 piece
204		6.00	FX-6-204	305	215	3 piece	-	-
216	219	6.00	FX-6-216/219	317 - 320	215	1 piece	-	-
254		6.00	FX-6-254	355	215	1 piece	-	-
267	273	6.00	FX-6-267/273	368 - 374	215	1 piece	-	-
306		6.00	FX-6-306	407	215	6 piece	-	-
324		4.50	FX-6-324	425	215	6 piece	-	-
356		4.20	FX-6-356	457	215	6 piece	-	-
406		4.20	FX-6-406	507	215	2 piece	-	-
457		3.70	FX-6-457	558	215	2 piece	-	-
508		3.40	FX-6-508	609	215	2 piece	-	-
610		2.90	FX-6-610	711	215	2 piece	-	-
711		2.60	FX-6-711	812	215	2 piece	-	-

Other information

Regulation Maximum permissible distance according to DIN 1988.

Remarks Pipe supports for plastic and stainless-steel pipes available on request.
Outer diameter is the same as installation diameter.
*Suitable for application with tubes of insulation thickness AF-3 and AF-4.

Duct support

Item	Insulation thickness [mm]	Width [mm]	Length [m]	Content [quantity]
AS-13MM	13	100	2	7 piece
AS-19MM	19	100	2	5 piece
AS-25MM	25	100	2	4 piece
AS-32MM	32	100	2	3 piece
AS-50MM	50	100	2	2 piece

All data and technical information are based on results achieved under the specific conditions defined according to the testing standards referenced. Despite taking every precaution to ensure that said data and technical information are up to date, Armacell does not make any representation or warranty, express or implied, as to the accuracy, content or completeness of said data and technical information. Armacell also does not assume any liability towards any person resulting from the use of said data or technical information. Armacell reserves the right to revoke, modify or amend this document at any moment. It is the customer's responsibility to verify if the product is suitable for the intended application. The responsibility for professional and correct installation and compliance with relevant building regulations lies with the customer. This document does not constitute nor is part of a legal offer to sell or to contract.

At Armacell, your trust means everything to us, so we want to let you know your rights and make it easier for you to understand what information we collect and why we collect it. If you would like to find out about our processing of your data, please visit our Data Protection Policy.

Trademarks followed by © or ™ are trademarks of the Armacell Group. © Armacell, 2024. All rights reserved.

ArmaFix | ArmaFix AF | Brochure | 032024 | en-GB

ABOUT ARMACELL

As the inventor of flexible foam for equipment insulation and a leading provider of engineered foams, Armacell develops innovative and safe thermal and mechanical solutions that create sustainable value for its customers. Armacell's products significantly contribute to global energy efficiency making a difference around the world every day. With more than 3,300 employees and 25 production plants in 19 countries, the company operates two main businesses, Advanced Insulation and Engineered Foams. Armacell focuses on insulation materials for technical equipment, high-performance foams for acoustic and lightweight applications, recycled PET products, next-generation aerogel technology and passive fire protection systems.

For more information, please visit:
www.armacell.com

